

## MD-110 Installation Guide



**WARNING!** The instructions in this document are to be performed only by the product distributor's trained and qualified technician. These instructions are not provided for the end-user of the equipment.



**IMPORTANT!** This document provides the procedure to install the MD-110 Media Drive into a Core 110f advanced DSP appliance. The MD-110 is an mSATA solid state drive specifically formatted, partitioned, and pre-configured for use in Q-SYS Core 110f.



**CAUTION!** Solid state drives are delicate electronic assemblies and are highly susceptible to ESD (Electrostatic Discharge). Make sure that proper grounding and handling procedures are followed.

### Backup Your Files!

Be sure to backup all media and design files before installing the MD-110 into your Core 110f. Visit [www.qsc.com](http://www.qsc.com) or contact your AET representative if you need additional information regarding file backup procedures.

### Required Tools

- Anti-static wrist strap - properly grounded
- Anti-static work mat
- Phillips #1 screwdriver
- Phillips #0 screwdriver

### Safety Procedure

1. Make sure that the AC Mains power cord is unplugged from the AC receptacle on the rear panel of the Core 110f.
2. Connect, and put on, the ESD grounded wrist strap..

### Installation Procedure

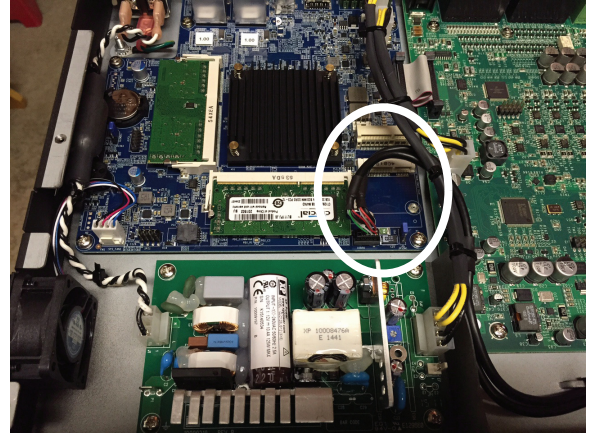
1. Use the #1 Phillips screwdriver to remove the 12 screws securing the top cover to the Core 110f chassis. Set aside for later use.
2. Remove the cover.
3. Locate the MD-110 mounting socket (white) on the blue motherboard. Refer to Figure 1.
4. Carefully remove the MD-110 from its packaging.



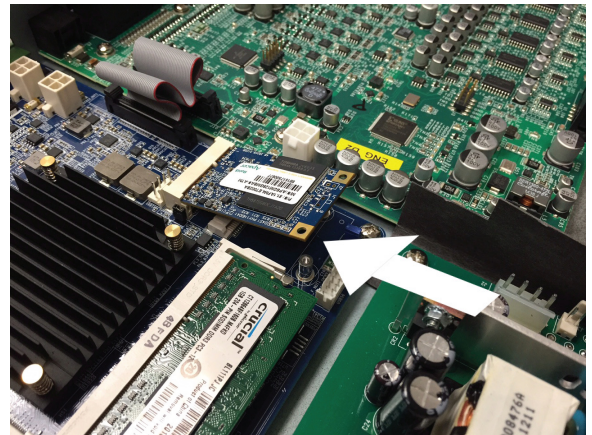
**NOTE:** The cables have been removed in Figures 2 and 3 for clarity. You do not have to remove any cables to complete this procedure.

5. Insert the MD-110 electrical contacts into the receptacle. The contacts are keyed so they cannot be installed incorrectly. Refer to Figure 2.

TD-000518-00-A



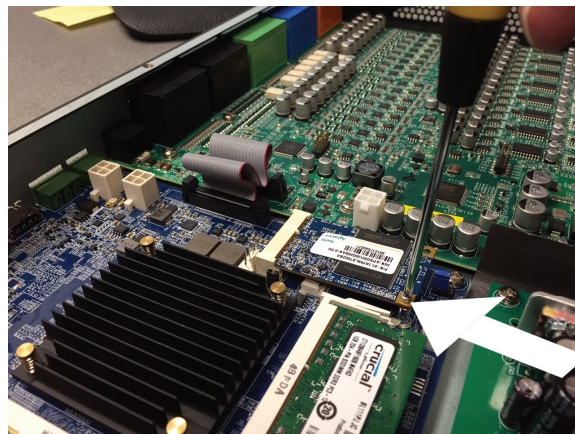
— Figure 1 —



— Figure 2 —



6. Use the #0 Phillips screwdriver and the M2 screw (supplied) to secure the MD-110 to the standoff on the motherboard. Refer to Figure 3



– Figure 3 –



#### **Mailing Address:**

QSC, LLC  
1675 MacArthur Boulevard  
Costa Mesa, CA 92626-1468 U.S.  
Main Number: (714) 754-6175  
World Wide Web: [www.qsc.com](http://www.qsc.com)

#### **Sales & Marketing:**

Voice: (714) 957-7100 or toll free (U.S. only) (800) 854-4079  
FAX: (714) 754-6174  
E-mail: [info@qsc.com](mailto:info@qsc.com)

#### **Q-SYS™ Customer Support**

##### **Application Engineering and Technical Services**

Monday - Friday 7 AM to 5 PM PST (Excludes Holidays)  
Tel. 800-772-2834 (U.S. only)  
Tel. +1 (714) 957-7150

#### **Q-SYS 24/7 Emergency Support\***

Tel: +1-888-252-4836 (U.S./Canada)  
Tel: +1-949-791-7722 (non-U.S.)



Q-SYS™ Customer Support

\*Q-SYS 24/7 Support is for Emergency assistance with Q-SYS systems only. 24/7 support guarantees a call back within 30 min after a message is left. Please include, Name, Company, Call Back Number and description of the Q-SYS emergency for prompt call back. If calling during business hours please use the standard support numbers above.

#### **Q-SYS Support Email**

[qsyssupport@qsc.com](mailto:qsyssupport@qsc.com)  
(Immediate email response times not guaranteed)

#### **QSC**

Technical Services  
1675 MacArthur Blvd.  
Costa Mesa, CA 92626 U.S.  
Tel: 800-772-2834 (U.S. only)  
Tel: +1 (714) 957-7150  
FAX: +1 (714) 754-6173

© 2015 QSC, LLC. All rights reserved. QSC and the QSC logo are registered trademarks of QSC, LLC in the U.S. Patent and Trademark office and other countries. All other trademarks are the property of their respective owners.

<http://patents.qsc.com>