

scandLIGHT

User Manual

***slimPAR* 1210 RGBWAP**

Item no: 941082



Unpacking: Thank you for purchasing the Scandlight slimPAR 1210 RGBWAP. Every 1210 RGBWAP has been tested and shipped in perfect operation condition. Carefully check the shipping carton for damage that may have occurred during shipping. If the carton appears to be damaged, carefully inspect your fixture for any damage and be sure all equipment necessary to operate the unit has arrived intact. In the event damage has been found or parts are missing, please contact our toll free customer support number for further instructions. Please do not return this unit to your dealer without contacting customer support first.

Introduction: The slimPAR 1210 RGBWAP has four DMX mode. The fixture can operate in three different operating modes; DMX control, sound-active, or in a Master/Slave configuration. The slimPAR 1210 RGBWAP comes with several built in programs that can be used, while operating as a dimmer unit or when used in multiples like in a master/slave configuration. For best results use fog or special effects smoke to enhance the beams projections.

WARNING! To prevent or reduce the risk of electrical shock or fire, do not expose this unit to rain or moisture.

WARNING! This may cause severe eye damage. Avoid looking directly into the light source at all times!

Features of SlimPAR 1210 RGBWAP

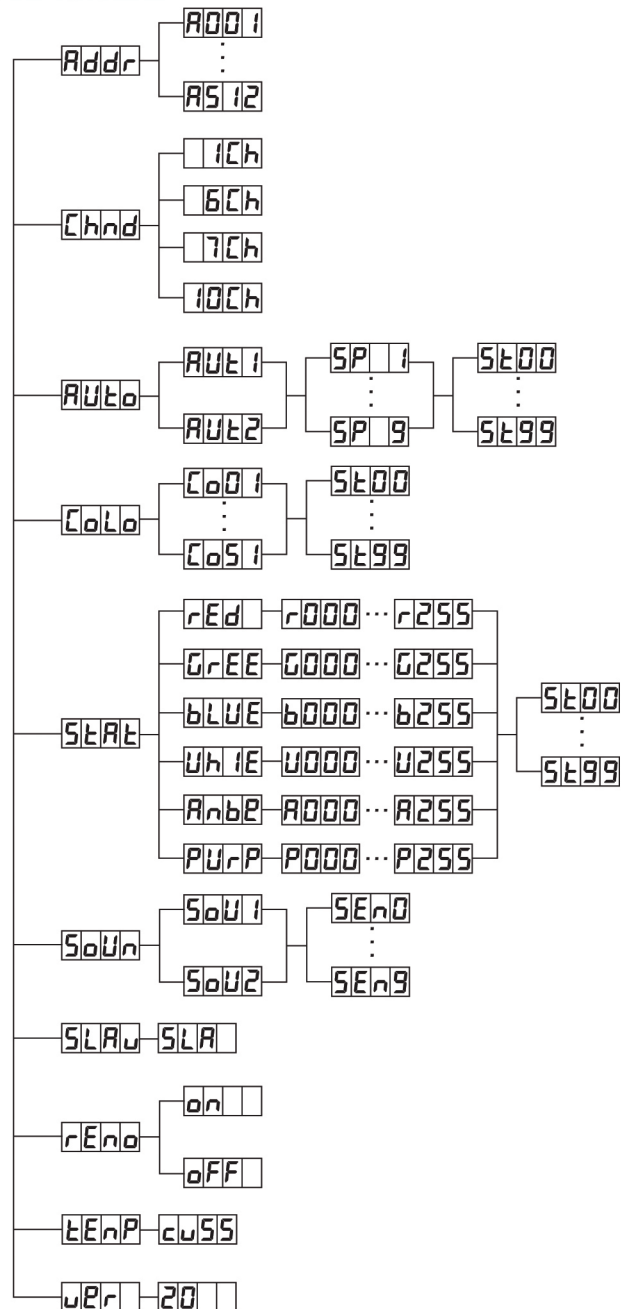
- Color Strobe Effect
- Color Mix Effect
- LED Chases (Adjustable Speeds)
- Electronic Dimming 0-100%
- Built in Microphone
- DMX-512 protocol
- Four DMX Modes
- 3 Operating Modes - Sound Active, Master/Slave Mode, and DMX Control
- DMX-512 Protocol Compatible
- Digital Display for Address and Function Setting

Model: SlimPAR 1210 RGBWAP

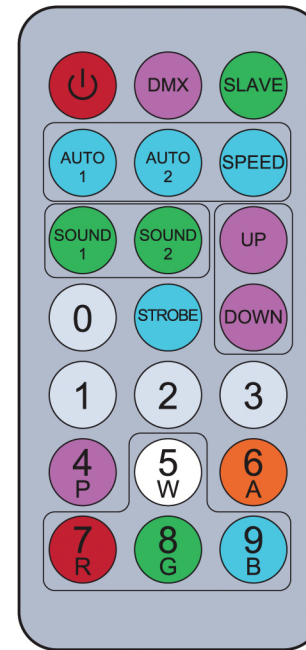
- Light Source: 12pcs ,10W 6 in 1 LED
- Beam Angle:25°
- Life Time: 80000-100,000 hours
- Dimming 0-100%with regulated constant color control
- Strobe: 10 Flashed per second (any color)
- Operation Mode: DMX 512,Manual.sound.internal program
- DMX control: 4 DMX mode,(1CH,6CH,7CH,10CH)
- Control panel: Digital 4 characters alphanumeric
- Input voltage: AC100-240V, 50-60HZ (Power supply switch)
- Max Power:110W
- Maximum Ambient Temperature: 40℃
- G.W:2.1kg

Please Note: Specifications and improvements in the design of this unit and this manual are subject to change without any prior written notice.

On Board System



IR Controller



Power on/off button

DMX button, to control DMX address when press this button. It is channel mode when double click.

Master-slave mode button.

Automatic mode button

Speed adjustive button

Sound mode button

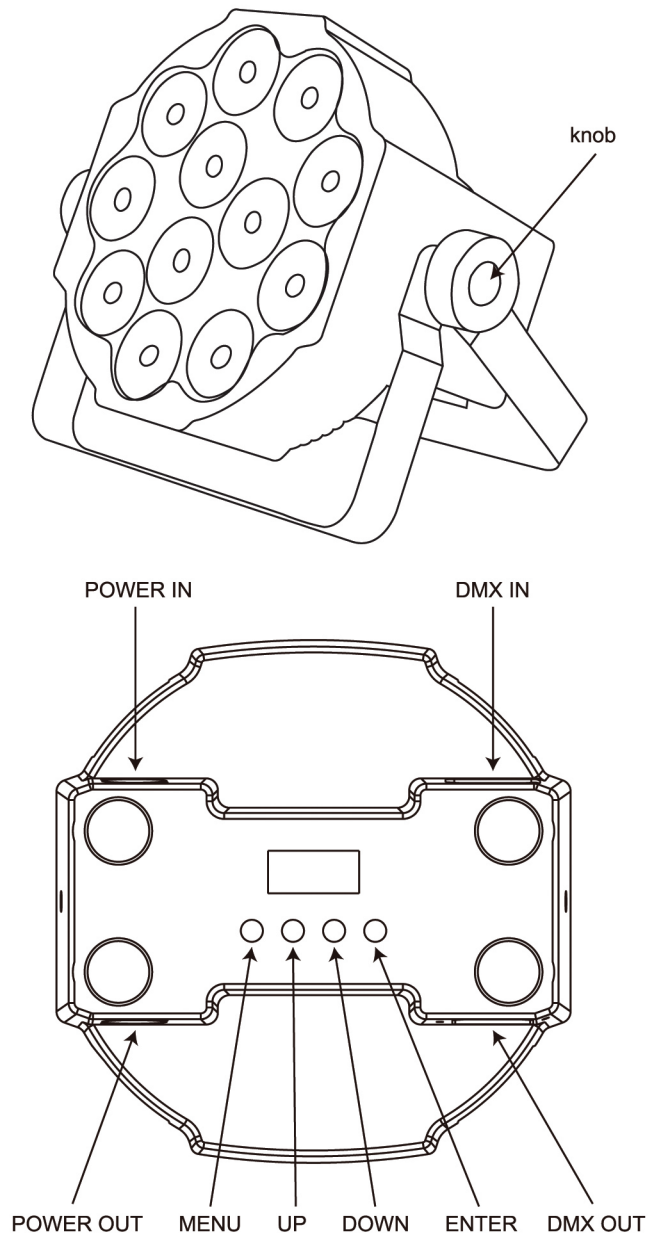
Up and down button, you can choose the program that you need or numerical.

Strobe button

You can use these number button to adjust numerical in any program mode.

Color choosing button.

Product Overview



Addr - DMX Address Setting via control board

1. Tap the MENU button and UP button or DOWN button until "Addr" is displayed, press ENTER.
2. "Axxx" will now be displayed, "x" represents the displayed address. Press the UP or DOWN buttons to find your desired address.

Chnd- This menu will let you select the channel

1. Tap the MENU button until "Chnd" is displayed, press ENTER.
2. Press UP or DOWN to select the channel

Auto -This menu will let you select your desired auto mode

1. Tap the MENU button and UP button or DOWN button until "Auto" is displayed, press ENTER.
2. "Autx" will now be displayed, You can confirm two modes by UP or DOWN for auto mode.

Colo - Manual color dimming mode

1. Press the MENU button and UP button or DOWN button until "CoLo" is displayed, press ENTER.
2. Either "Co XX" or "XX" representing a number between 1-51 will be displayed. Press the UP or DOWN buttons to select either a static color.

Stat- This menu will let you select your desired static color mode and strobe mode

1. Tap the MENU button until "Stat" is displayed, press ENTER.
2. There will be five options. Press ENTER can select the option and press UP or DOWN button can select the value you desire as below.
 - 1) red~R000~R255
 - 2) gree~G000~G255
 - 3) blue~B000~B255
 - 4) uhie~U000~U255
 - 5) anbe~A000~A255
 - 6) purp~P000~P255

Soun - This menu will let you select your desired sound mode

1. Tap the MENU button until "Soun" is displayed, press ENTER.
2. "Soux" will now be displayed, you can confirm two modes by UP or DOWN for sound mode.

SLav- This menu will let you select your desired Master/slave mode

1. Tap the MENU button until "SLav" is displayed, press ENTER.
2. "Sla" will now be displayed, Slave mode is confirmed. It will be slaved by auto mode sound mode and chase mode

reno - This menu will let you select to close or open the infrared

1. Tap the MENU button until "reno" is displayed, press ENTER.
2. "on" or "off" will now be displayed, you can select to close or open the infrared.

temp - This menu will display the temperature control function

1. Tap the MENU button until "temp" is displayed, press ENTER.
2. "cuXX" will now be displayed, when the light working, it's temperature above 55 degrees, then the fan will start work and start the cooling function. If the temperature less than 55 degrees, the fan doesn't work, no any noise. But if the fan is broken, it will automatically cut off the power supply.

uer-This will display the software version

1. Press the UP or DOWN button until "uer" is displayed, press ENTER.
2. The software version will be displayed.

DMX control mode

DMX Mode 1:1CH

Channel	Value	Description
ch1	1 -- 4	red
	5 -- 9	green
	10 -- 14	blue
	15 -- 19	Macro Color 1
	20 -- 24	Macro Color 2
	25 -- 29	Macro Color 3
	30 -- 34	Macro Color 4
	35 -- 39	Macro Color 5
	40 -- 44	Macro Color 6
	45 -- 49	Macro Color 7
	50 -- 54	Macro Color 8
	55 -- 59	Macro Color 9
	60 -- 64	Macro Color 10
	65 -- 69	Macro Color 11
	70 -- 74	Macro Color 12
	75 -- 79	Macro Color 13
	80 -- 84	Macro Color 14
	85 -- 89	Macro Color 15
	90 -- 94	Macro Color 16
	95 -- 99	Macro Color 17
	100 -- 104	Macro Color 18
	105 -- 109	Macro Color 19
	110 -- 114	Macro Color 20
	115 -- 119	Macro Color 21
	120 -- 124	Macro Color 22
	125 -- 129	Macro Color 23
	130 -- 134	Macro Color 24
	135 -- 139	Macro Color 25
	140 -- 144	Macro Color 26
	145 -- 149	Macro Color 27
	150 -- 154	Macro Color 28
	155 -- 159	Macro Color 29
	160 -- 164	Macro Color 30
	165 -- 169	Macro Color 31
	170 -- 174	Macro Color 32
	175 -- 179	Macro Color 33
	180 -- 184	Macro Color 34
	185 -- 189	Macro Color 35
	190 -- 194	Macro Color 36
	195 -- 199	Macro Color 37
	200 -- 204	Macro Color 38
	205 -- 209	Macro Color 39
	210 -- 214	Macro Color 40
	215 -- 219	Macro Color 41
	220 -- 224	Macro Color 42
	225 -- 229	Macro Color 43
	230 -- 234	Macro Color 44
	235 -- 239	Macro Color 45
	240 -- 244	Macro Color 46
	245 -- 249	Macro Color 47
	250 -- 255	Macro Color 48

DMX Mode 2:6CH

Channel	Value	Function
ch1	0--255	Red (0%--100%)
ch2	0--255	Green (0%--100%)
ch3	0--255	Blue (0%--100%)
ch4	0--255	White (0%--100%)
ch5	0--255	Amber (0%--100%)
ch6	0--255	Purple (0%--100%)

DMX Mode 3:7CH

Channel	Value	Function
ch1	0--255	dimmer (0%--100%)
ch2	0--255	Red (0%--100%)
ch3	0--255	Green (0%--100%)
ch4	0--255	Blue (0%--100%)
ch5	0--255	White (0%--100%)
ch6	0--255	Amber (0%--100%)
ch7	0--255	Purple (0%--100%)

DMX Mode 4:10CH

Channel	Value	Function
ch1	0--255	dimmer (0%--100%)
ch2	0--255	Red (0%--100%)
ch3	0--255	Green (0%--100%)
ch4	0--255	Blue (0%--100%)
ch5	0--255	White (0%--100%)
ch6	0--255	Amber (0%--100%)
ch7	0--255	Purple (0%--100%)
ch8	0--50	Dimmer
	51--101	Run auto mode 1
	102--152	Run auto mode 2
	153--203	Run sound mode 1
ch9	204--255	Run sound mode 2
	0--255	When CH 7 value=51—152, CH 8 adjust speed (0—255, from slow to fast). When CH 7 value=153—255, CH 8 adjust sound sensitivity (0—29=close,30-255=low to high)
	0--9	No strode
	10--255	Strode from slow to fast